

## **VST-75** Compact gate control unit with integrated frequency converter for rotation speed independent control especially of sectional gates.



### **Special Features**

- Mechanic protecting gate movements with highest dynamic and speed.
- Plastic housing for easy installation.
- Diagnosis and failure display.
- Model inspected safety conception.
- Operation of three phase AC motors up to 0.75 kW.
- Slots for additional modules.  
(e.g. Clear text display).
- Easy installation due to self-learning controller-set-ups and pre-installed parameters for most standard gates.

Please Contact Our Sales Department On 01928 579050 For Further Information

### LEDs:

- Frequency converter status (green)
- Emergency Stop/24V (red)
- Safety Edge (yellow)
- Operation (green)

### 4-characters 7-segment

- User interface
- Diagnosis, Status display
- Parameter setup
- Service- + Cycle counter
- Error memory

### Positioning via:

- mechanical limit switches
- electronic limit switches (absolute / Incremental)

### 3x Emergency stop/Safety

(Separate evaluation and diagnosis)

### Integrated Safety edge controller

- Conductive edge
- Optical edge
- pneumatic with testing

### 24 V-Inputs 1...10

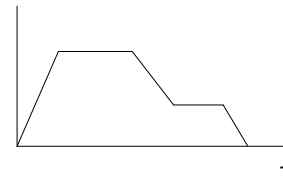
- programmable, for example:
- ext. Open-, Stop-, Close-commands
- light beams
- additional safety equipment
- One channel, input series
- cross traffic logic
- door lock
- Deadman/automatic operation

### Additional features

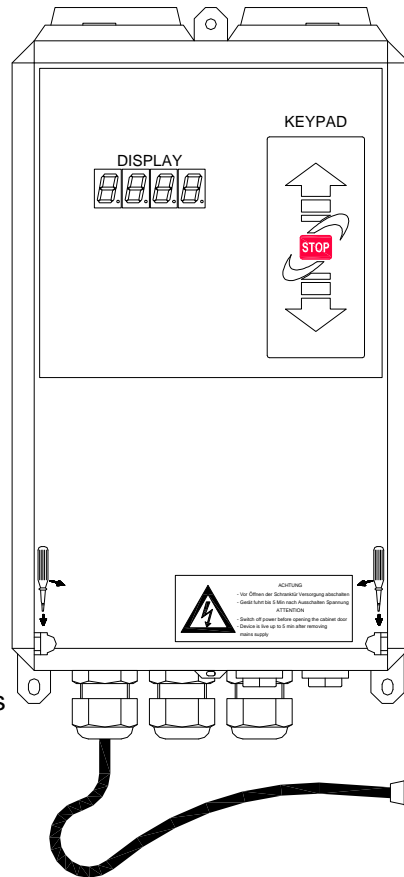
- Conform with TÜV and CE regulations.
- 24 V DC control voltage VDE 0700.
- integrated control electronic works with different safety strips (resistance / optical systems).
- ESD resistance up to 25 kV!
- Plug in sockets for additional modules:
  - One-/two channel inductive loop detector.
  - One-/two channel radio (FM 433 MHz / 868 MHz).
  - VFD display with multilingual real text display.
  - Expansion card for interlocking.
- mechanical or electronic limit switch operation.
- incl. CEE-plug as main switch.  
Option: Emergency stop push button.
- Plug in terminals for main control functions.
- up to 17 digital inputs and 2 relay outputs have standard functions ex factory - various special functions can be selected on side:
- Functionality, operating mode, in-/output type, clear-/open hold-timer, directional logic, diagnostic for LCD, ...
- Version TST FUS-C with additional brake resistor (chopper) for discharge of generated voltage.

Frequency converter with variable speed & ramps

V (f)



Automatic adaptation self learning !



### Motors up to 0.75 kW at 230 V

(U, V, W)

Option: Brake chopper + resistance control.

### electro mechanical brake

- separate controlled relay output
- potential free Form C contact

### Power supply for external equipment

- Input power protected on board
- Regulated 24 V DC VDE0700

### 2x Relay

(voltage free change over contacts)

- door position status
- warning light / traffic lights
- error message
- door lock
- hall light

### Technical data

#### Housing:

Plastic with head-sink

WxHxD: 180 x 320 x 110 mm

#### Input power:

1~240 Vac +/- 10% / 50-60Hz

#### Motor wiring:

for 3-phase motors  
up to 0.75 kW / 5 A

#### Possible operating frequency:

6 - 200 Hz

separate, adjustable frequency ramps for all door operating modes

#### Control voltage/ Supply voltage for external equipment:

24Vdc, 24Vdc +/- 5% / 250mA

electrical short protected

#### Temperature range:

-10°C up to 50°C

#### Regulations:

Doors: EN 12453 / EN 12978

Low voltage.: EN 60335 (VDE 0700)

EMC: EN 50081 / EN 50082

#### Standards:

TÜV Germany

Please Contact Our Sales Department On 01928 579050 For Further Information