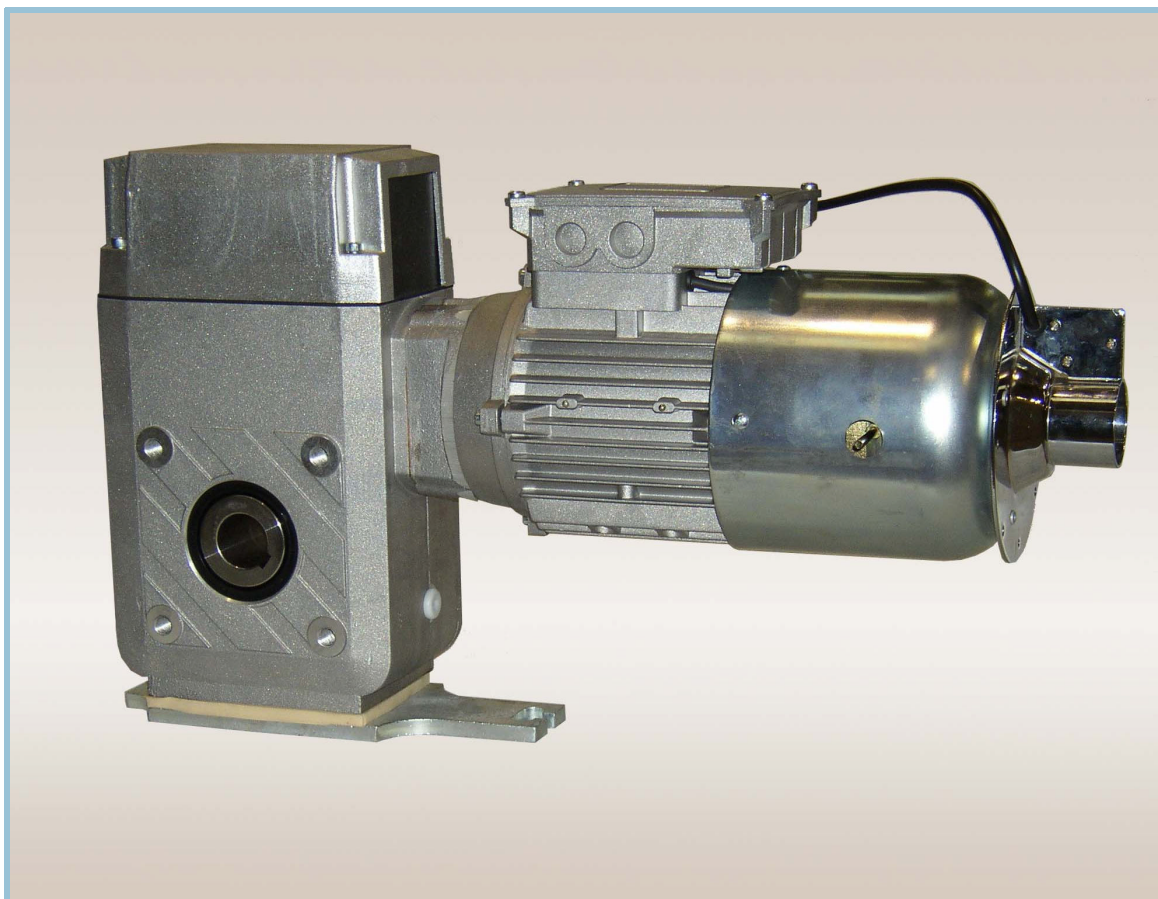


TVRA-8 Rapid Roll Door Operator



Special Features

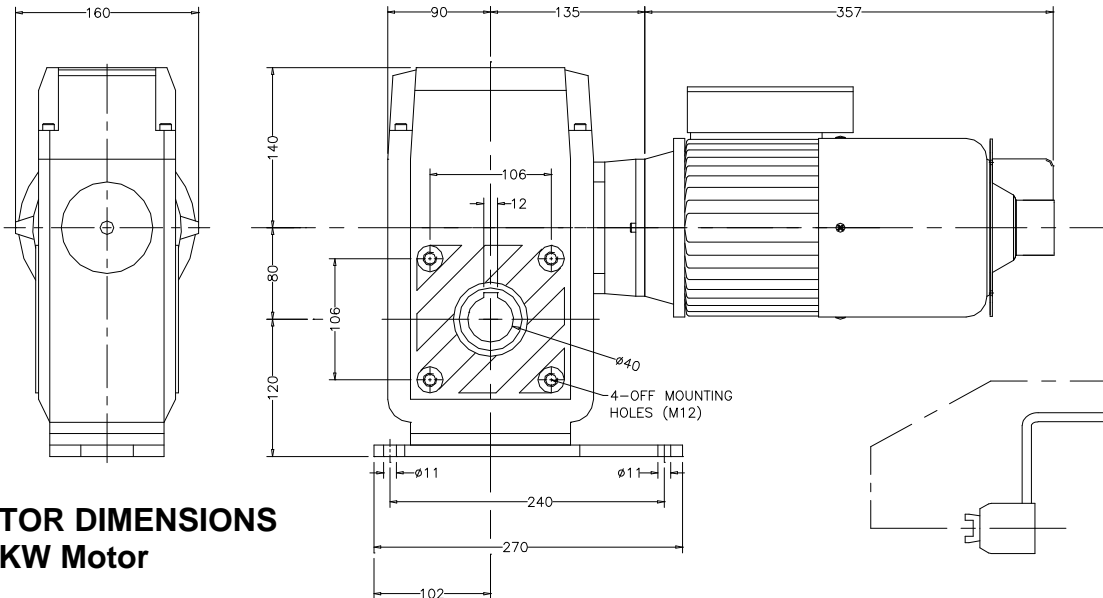
- * Integral Safety Gear
- * Hand Crank System
- * Safety Interlock Switch for Manual Operation
- * Integral Thermal Protection
- * I.P. 54 Environment Protection
- * Gear Driven Limit Switches
- * Phosphor Bronze Worm Wheel
- * High starting Torque—Industrial Duty Motor
- Universal Mounting

Please Contact Our Sales Department On 01928 579050 For Further Information

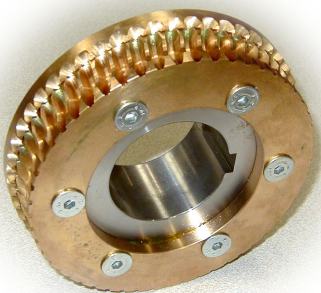
PRODUCT DESCRIPTION

The TVRA-8 Rapid Rolling Door Operator is supplied with a 1.1 kW 230V Three Phase Brake Motor. This model is fitted with a Hand Crank System which enables the door to be manually operated in the event of mains failure. Other powers and speed are available on request

Data \ Type	TVRA-8 c/w HAND Crank / W.G.I. (40mm Bore)							
Power (kW)	1.1				1.1 100Hz (Eff 1.91)			
Torque (Nm)	220	160	140	95	190	140	120	80
Output Speed (R.P.M.)	26	42	52	85	52	85	104	170
Environmental Protection	I.P.54							
Current (Amps)	4.8				8.3			
Power Supply	230V / 3PH / 50HZ				133V / 3PH / 50HZ			



OPERATOR DIMENSIONS
For 1.1 KW Motor



Integral Safety Gear

The Integral Safety Gear ensures safe operation for un-sprung rapid rolling doors.

In the unlikely event of main drive gear failure, the secondary 'safety gear' is engaged locking the drive and preventing the door from dropping.



VST Control Panel

The VST 'Speedlink' control panel has been purposely built for 'Rapid Action' industrial doors and gates.

For further details of the control panel request our Data Sheet CD02-04.