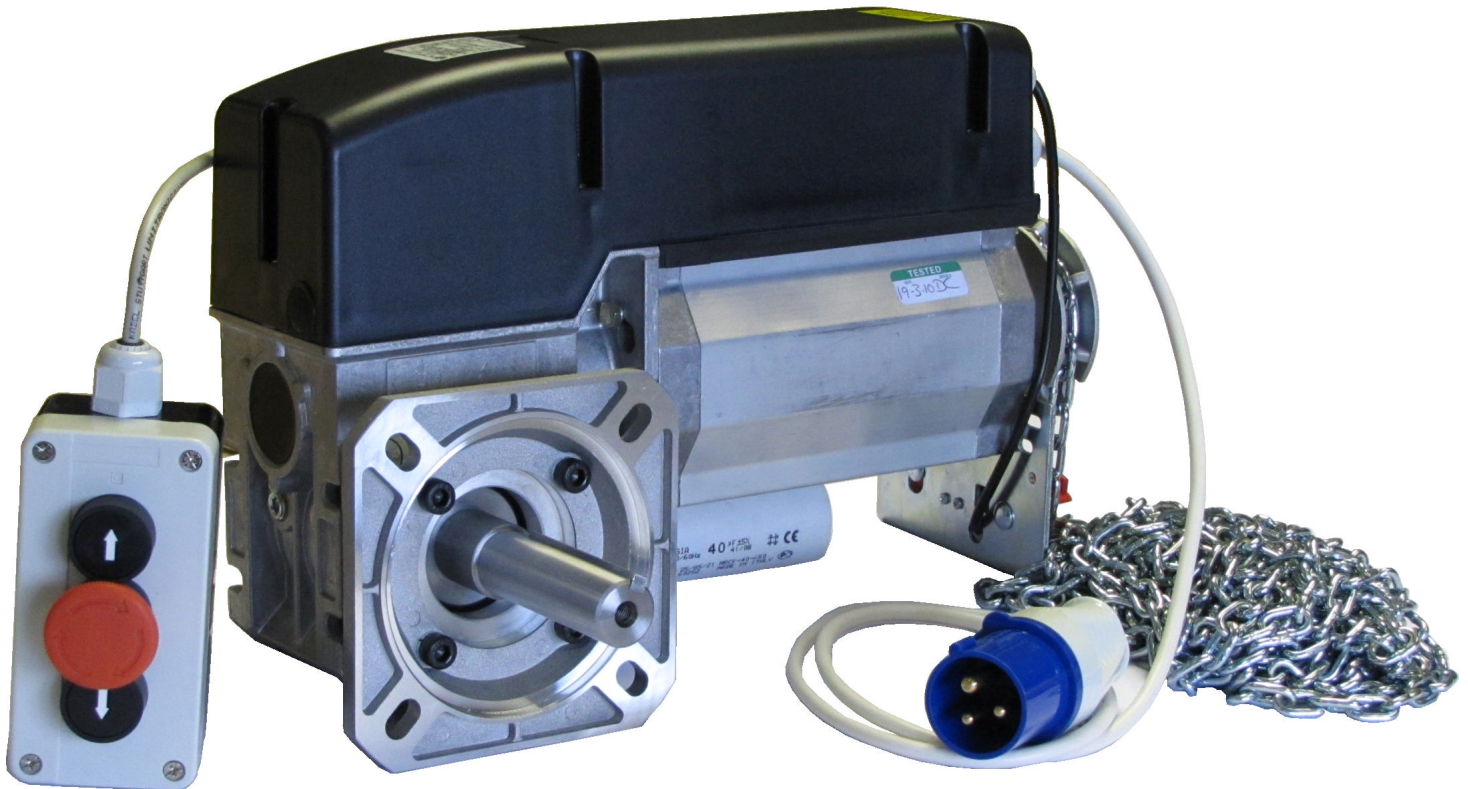


1ph CDO-100E Rolling Door Operator



Special Features:

- * Available with pre-wired starter.
- * Available with a variety of manual operating systems.
- * 1" industry standard output shaft.
- * Handing can be changed on site to suit the installation.
- * Developed to make installation easy and simple.
- * Integral Thermal Protection.
- * IP 54 Environment Protection.
- * Gear driven Limit Switches.
- * Phosphor bronze Worm Wheel.

Please Contact Our Sales Department On 01928 579050 For Further Information

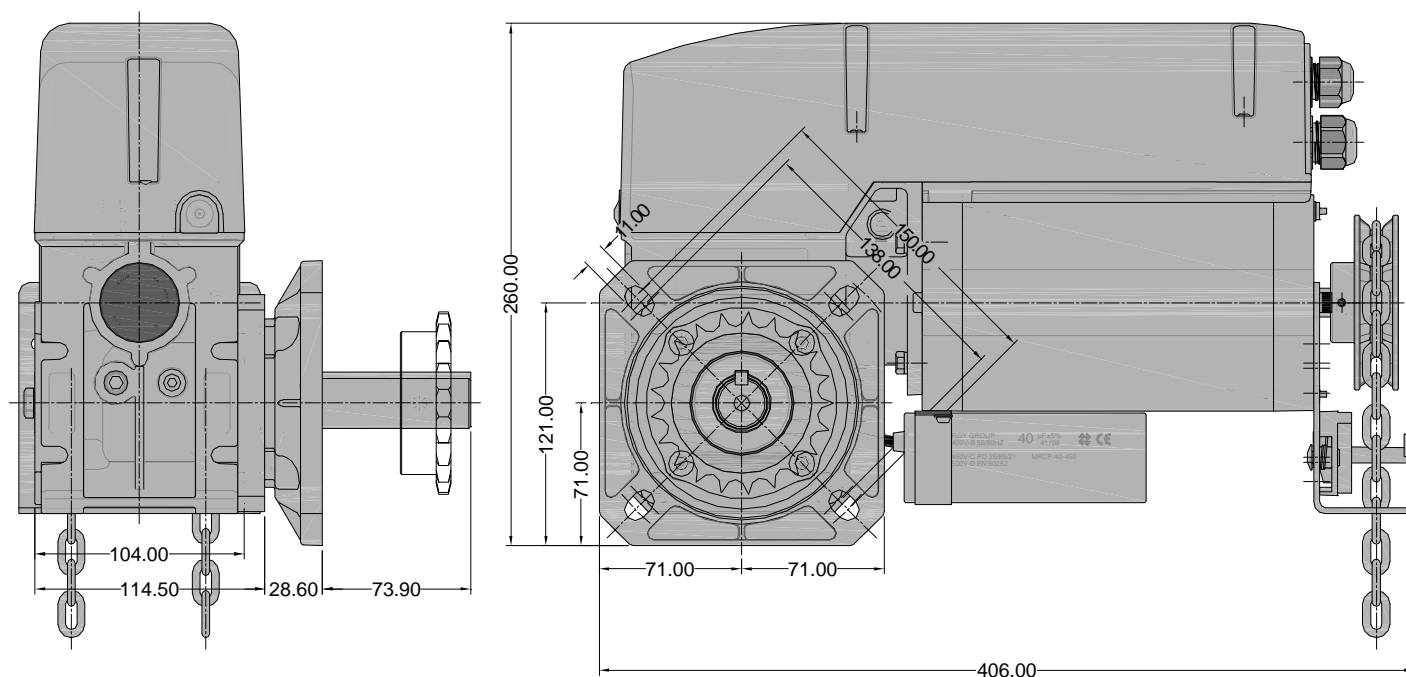
Product Description

The CDO-100E Rolling Door Operator has a 0.37kW, 240V Single Phase Motor. These models are available with either a High Level or Floor Level Hand Chain System, which can enable the roller shutter door to be manually opened & closed when required.

TECHNICAL INFORMATION

Data	Type	CDO-100E
Power (kW)		0.37
Torque (Nm)		80
Output Speed (R.P.M.)		24
Number of Turns		22
IP Rating		54
Current (Amps)		4.8
Power Supply		240V/1PH/50Hz

DIMENSIONS: CDO-100E 1PH c/w High Level Hand Chain System



Please Contact Our Sales Department On 01928 579050 For Further Information