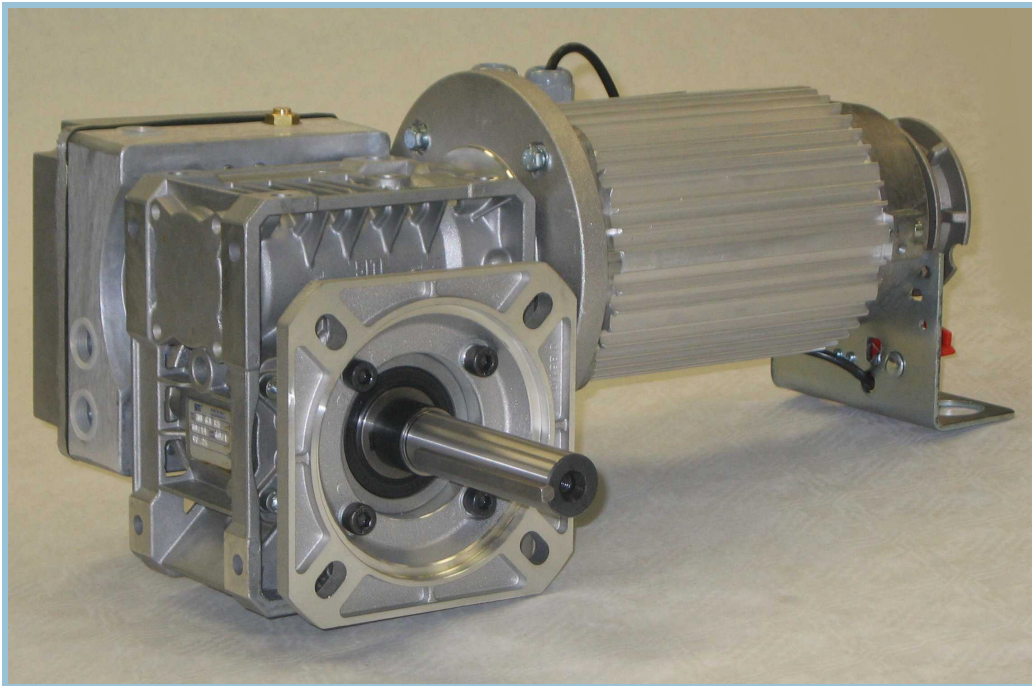


## CDO-150

### Flangemount Operator



### Product Description

The CDO-150 Rolling Door Operator is available with a 1.1kw, 400v Three Phase Brake Motor. These models are fitted with either a Hand Crank, Floor Level Hand Chain System or High Level Hand Chain System which enables the roller shutter door to be manually opened & closed when required.

### Special Features

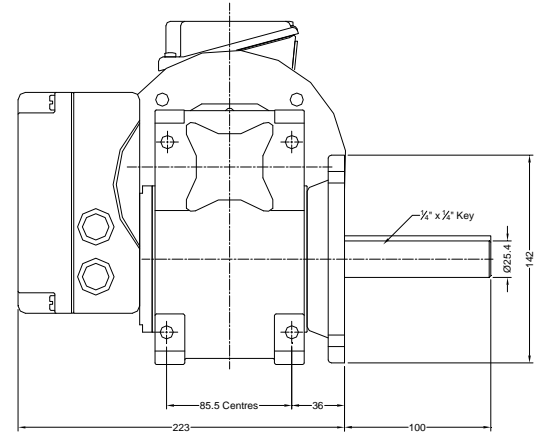
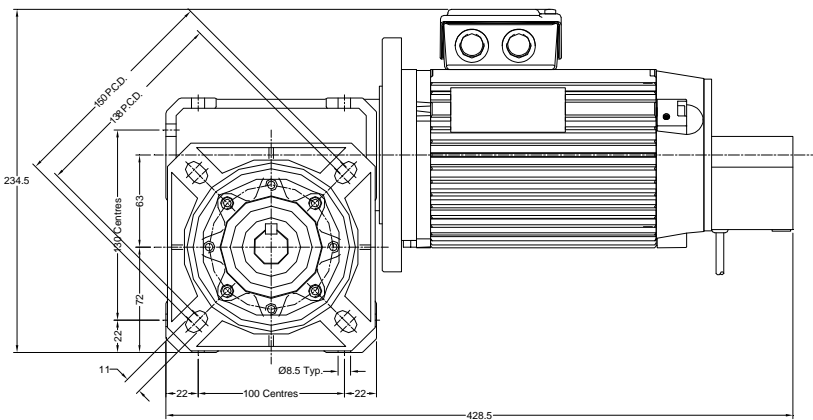
- \* Safety Interlock Switch for Manual Operation
- \* Integral Thermal Protection
- \* 1" industry standard output shaft.
- \* IP 54 Environment Protection
- \* Gear Driven Limit Switches
- \* Phosphor Bronze Worm Wheel
- \* High Starting Torque—Industrial Duty Motor

Please Contact Our Sales Department On 01928 579050 For Further Information

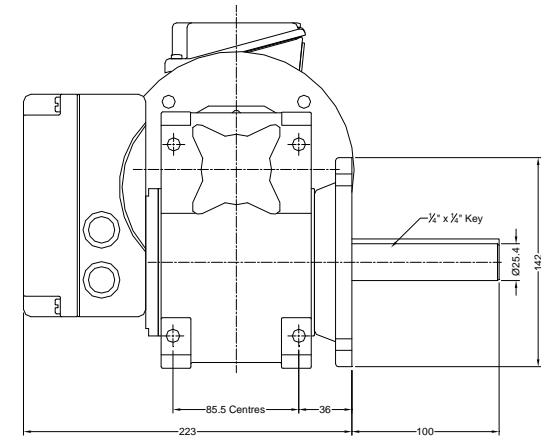
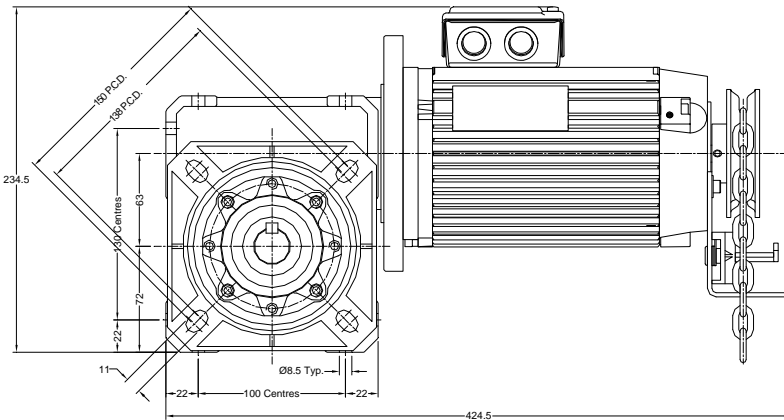
## TECHNICAL INFORMATION

Data \ Type	CDO-150 3ph c/w Hand Crank		CDO-150 3ph c/w Floor Level Hand Chain		CDO-150 3ph c/w High Level Hand Chain	
Power (kW)	1.1					
Torque (Nm)	197	110	197	110	197	110
Output Speed (R.P.M.)	24	45	24	45	24	45
Environmental Protection	I.P.54					
Current (Amps)	2.6					
Power Supply	400v/3ph/50Hz					

### OPERATOR DIMENSIONS:- CDO-150 c/w Hand Crank



### OPERATOR DIMENSIONS:- CDO-150 c/w High Level Hand Chain



### OPERATOR DIMENSIONS:- CDO-150 c/w Floor Level Hand Chain

