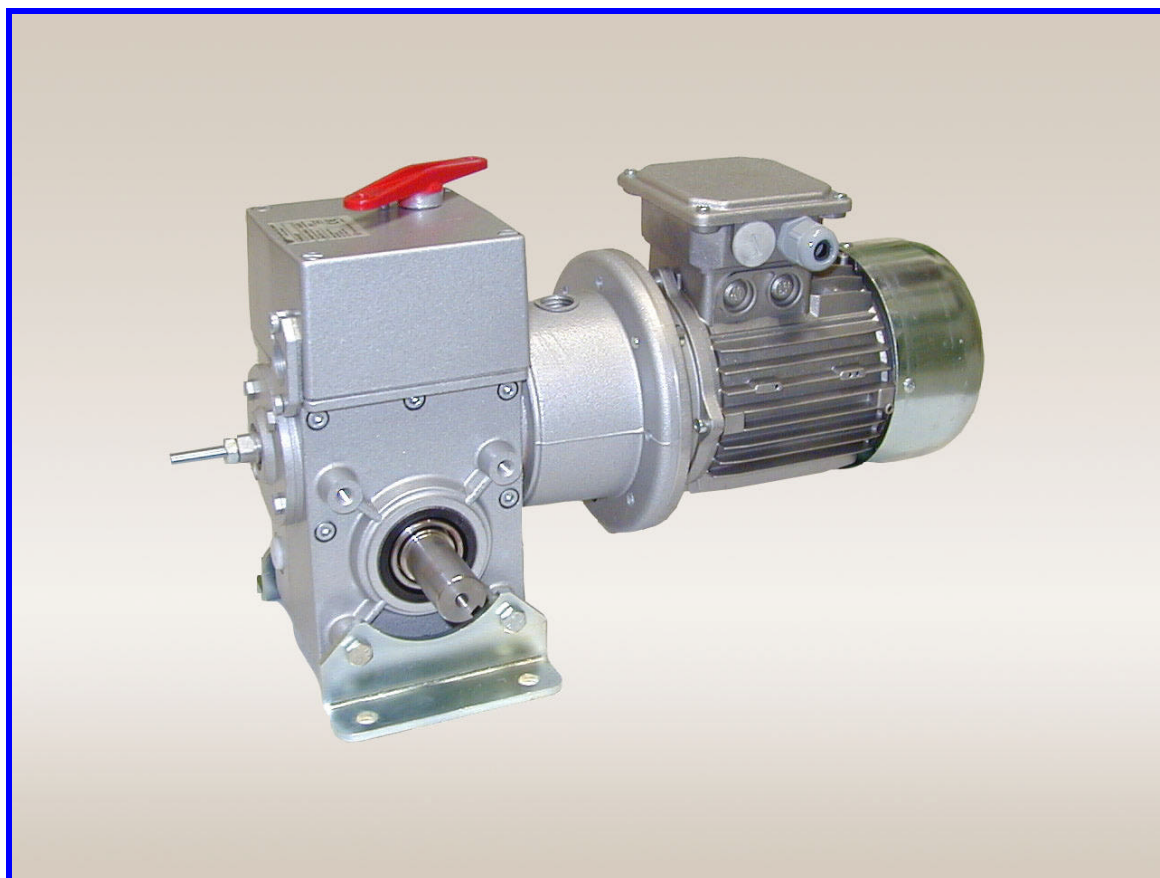


TVRFC

Footmounted Sliding Door Operator



Special Features

- * Integral Slipping Clutch
- * Integral Thermal Protection
- * I.P. 54 Environment Protection
- * Phosphor Bronze Worm Wheel
- * High starting Torque—Industrial Duty Motor
- * Industry Standard 1" Shaft
- * Disengage Clutch for Simple Emergency Operation

Please Contact Our Sales Department On 01928 579050 For Further Information

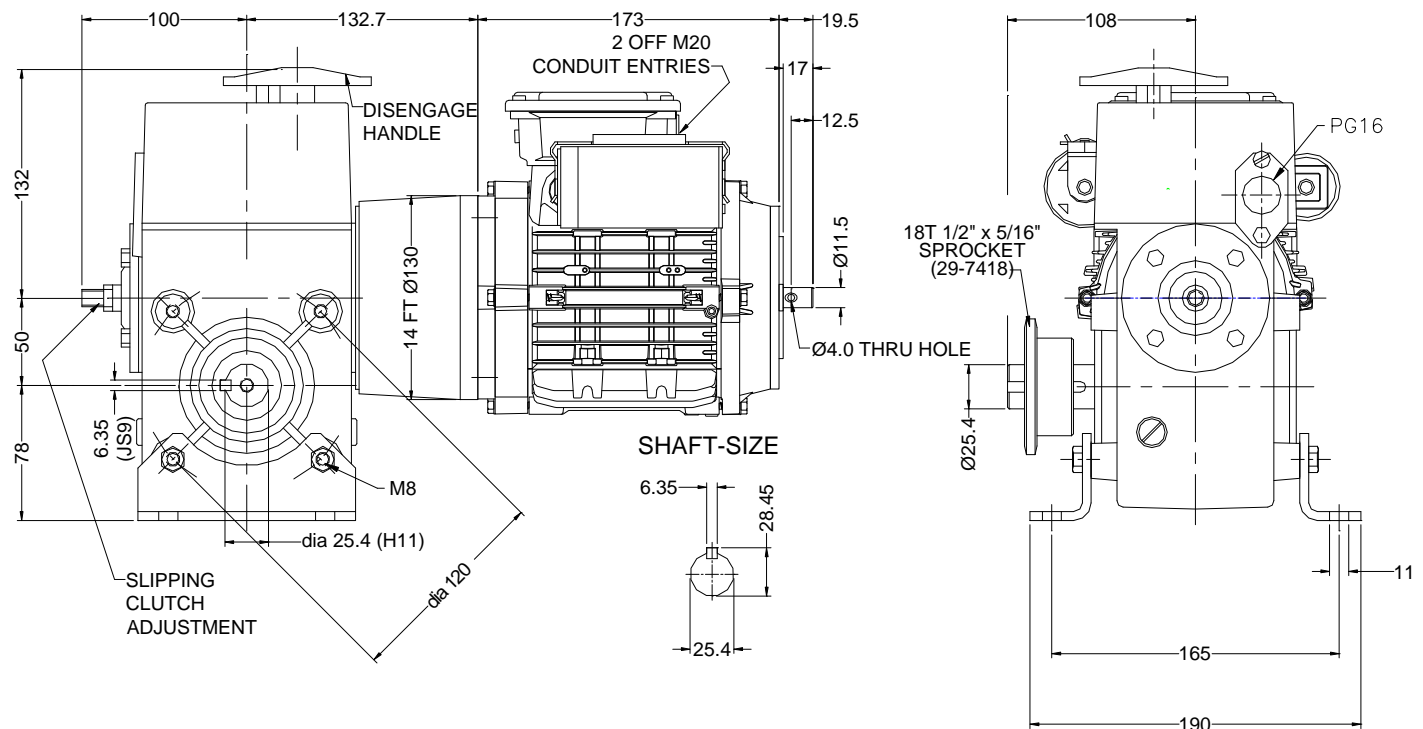
PRODUCT DESCRIPTION

The TVRFC Sliding Door Operator is available in 230V Single phase 0.37 kW & 400V Three phase 0.55 & 0.74 kw power sizes, These models are fitted with a Disengage Clutch which enables the sliding door to be manually operated when required. An Adjustable Slipping Clutch is provided for additional protection and safety.

Data \ Type	TVRFC-50 c/w Disengage Clutch	TVRFC-50/1 c/w Disengage Clutch	TVRFC-100 c/w Disengage Clutch
Power (kW)	0.37	0.55	0.74
Output Speed (R.P.M.)	45	45	45
Environmental Protection	I.P.54	I.P.54	I.P.54
Current (Amps)	2.57	2.0	3.1
Power Supply	230v/1ph/50Hz	400v/3ph/50Hz	400v/3ph/50Hz

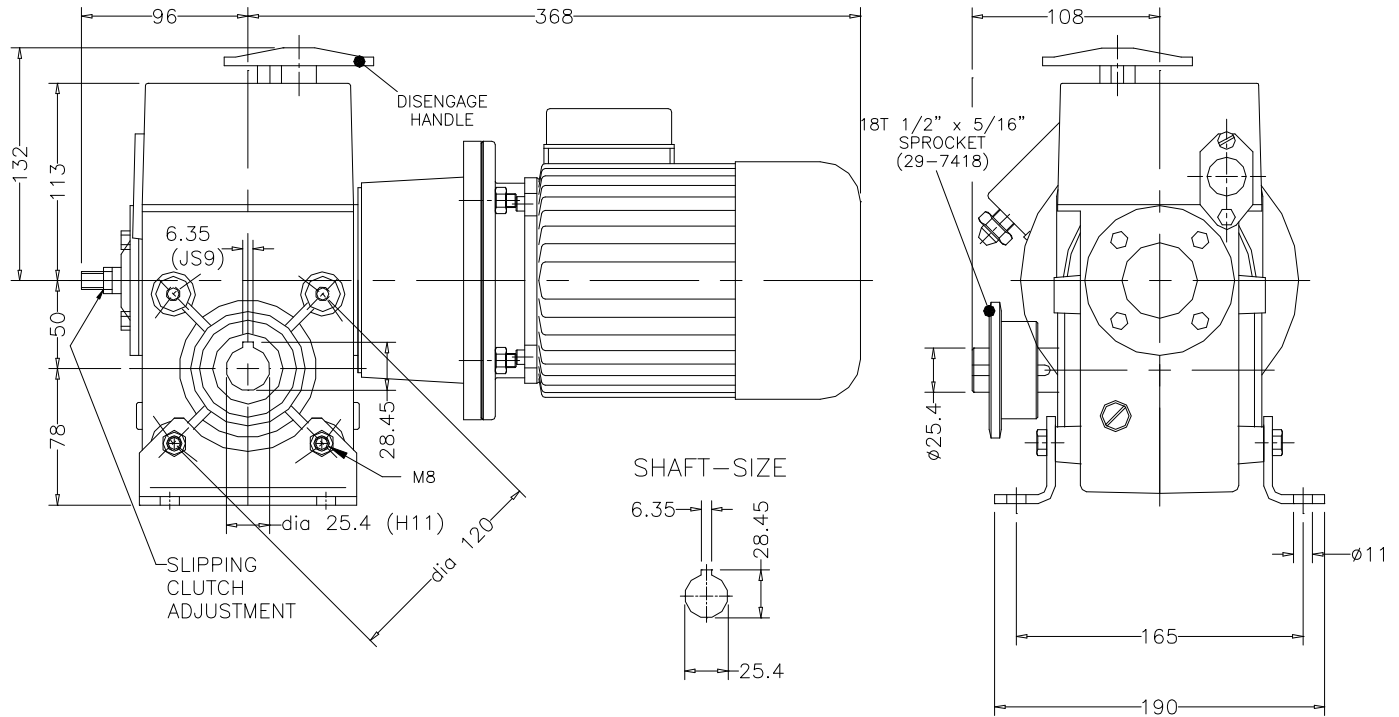
OPERATOR DIMENSIONS

TYPE:- TVRFC-50 c/w Disengage Clutch



OPERATOR DIMENSIONS

TYPE:- TVRFC-50/1 c/w Disengage Clutch



OPERATOR DIMENSIONS

TYPE:- TVRFC-100 c/w Disengage Clutch

